

Crane Scale Load Cell



FEATURES

- Capacity: 1.5t to 30t
- Alloy steel construction
- Integrated overload protection for both tension and compression loading
- Direct mounting of weight indicator
- IP67 protection

DESCRIPTION

Model 91002 is an alloy steel shear beam load cell designed for crane scale and hanging scale applications. The load cell design features integrated overload protection for both tension and compression loading with a rated output of 1.5mV/V.

Model 91002 is supplied with a Teflon cable which makes the load cell ideal for harsh environments. The design also allows for direct mounting of the weight indicator which is typical for crane scale applications.

APPLICATIONS

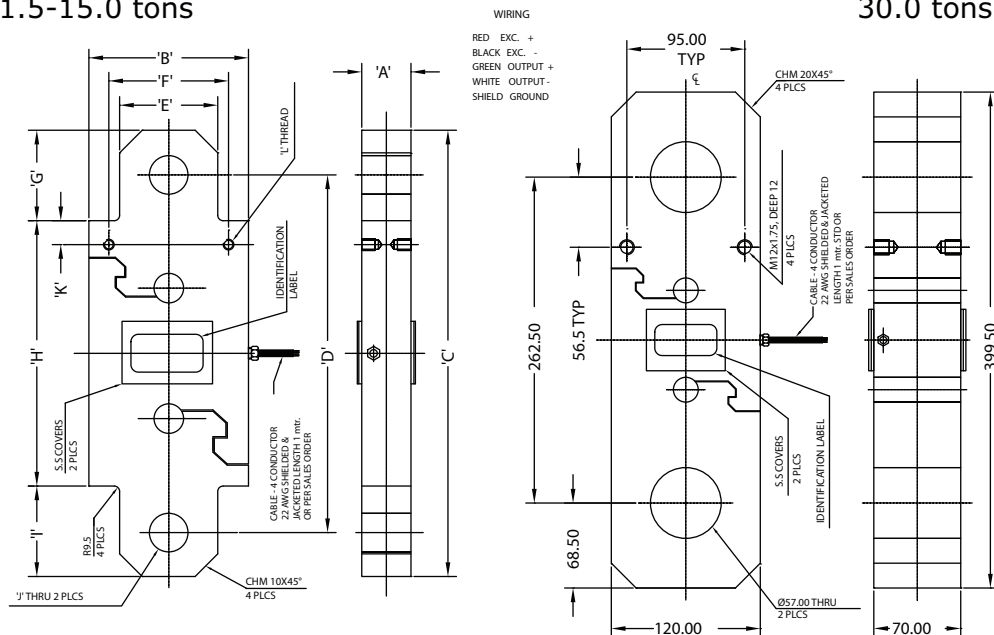
- Crane scales
- Hanging scales

OUTLINE DIMENSIONS in millimeters

CAPACITY	A	B	C	D	E	F	G	H	I	J	K	L THREAD
1.5, 3.0, 5.0 tons	29.7	69.5	289.0	238.6	50.0	50.0	49.0	130.0	110.0	19.0	10.0	M6 x 1.0, DEEP 12.0, 4 PLCS
7.5, 15.0 tons	37.0	120.0	399.5	295.5	73.8	90.0	100.0	199.5	100.0	36.0	18.0	M12 x 1.75 DEEP 12.0, 4 PLCS

1.5-15.0 tons

30.0 tons



SPECIFICATIONS

PARAMETER	VALUE	UNIT
Rated output-R.O.	1.5	mV/V
Rated output tolerance	5	± %FSO
Zero balance	1	± %FSO
Combined error	< 0.050	± %FSO
Non-linearity	< 0.030	± %FSO
Hysteresis	< 0.020	± %FSO
Non-repeatability	< 0.020	± %FSO
Creep error (30 minutes)	< 0.020	± %FSO
Temperature effect on zero	< 0.002	± %/°C
Temperature effect on output	0.001	± %/°C
Operating temperature range	-20 TO +70	°C
Maximum safe central overload	150	%FSO
Ultimate central overload	300	%FSO
Excitation, recommended	10	Vdc
Excitation, maximum	15	Vdc
Input impedance	360-450	Ω
Output impedance	349-355	Ω
Insulation resistance at 50 VDC	>1000	MΩ
Material	Alloy steel with electroless nickel plated	
Environmental protection	IP67	